



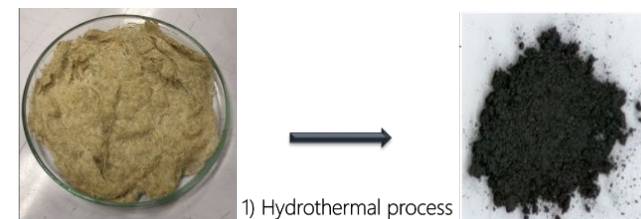
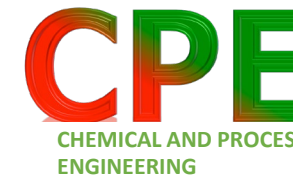
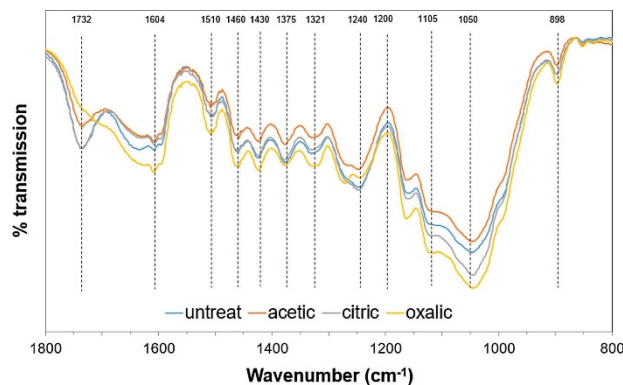
Assoc. Prof. Dr. Malinee Sriariyanun

รองศาสตราจารย์ ดร. มาลินี ศรีอริยานันท์

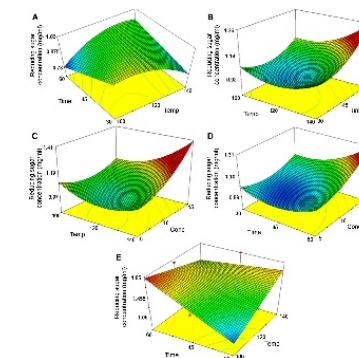
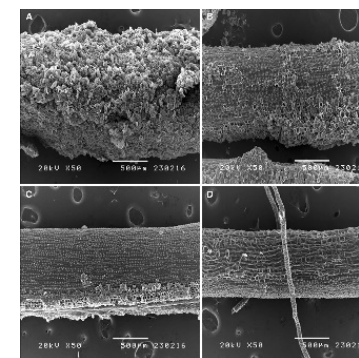
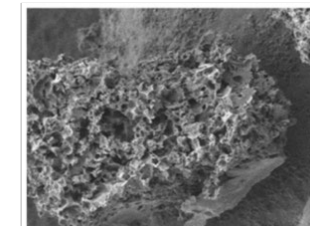
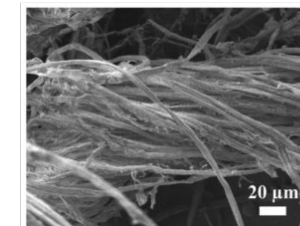
Collaboration:

Research Area:

- Microbial metabolic engineering-metabolite production by modification of metabolic pathways
- Functional Genomics Analysis, especially integration of transcriptional profiling, proteomics, and metabolomics analysis
- Biofuel and petro-chemical derivative synthesis from lignocellulosic biomass using microbial model to produce biocatalysts
- Development of enzyme production process for industry application using microbe as a model



1) Hydrothermal process
2) KOH Activation
3) Carbonization at 850 °C



Chemical and Process Engineering

TGGGS-Building, Floor 10th

Email: malinee.s@tggs.kmutnb.ac.th

Tel: 02-555-2000 Ext.2927

