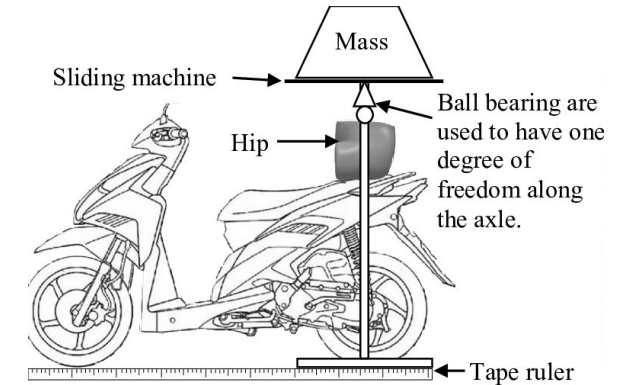
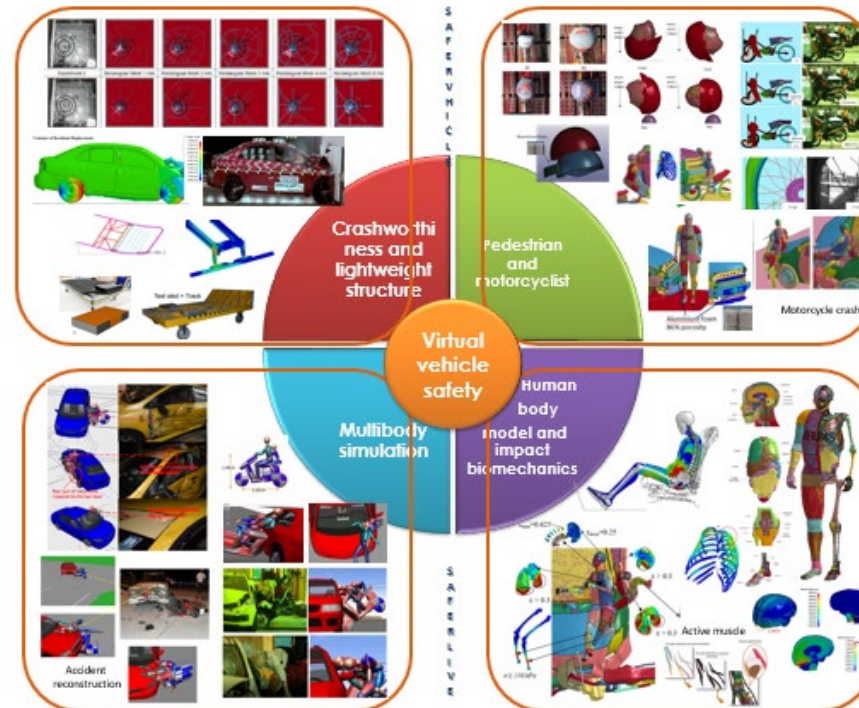
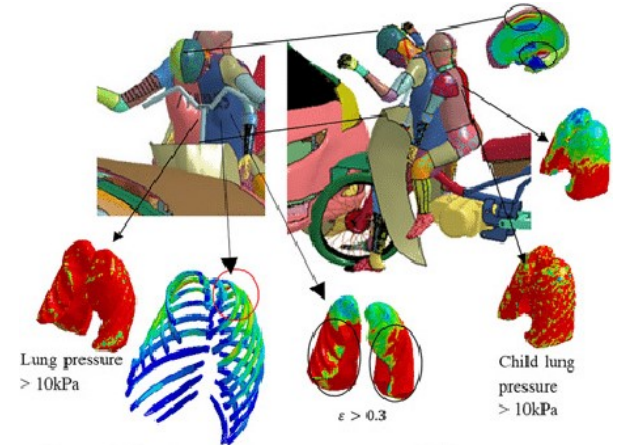




Assoc. Prof. Dr. Julaluk Carmai
รองศาสตราจารย์ ดร. จุฬาลักษณ์ คำไม้

Research Area:

- Finite element modelling in automotive safety and biomechanics
- Human Body Finite Element Model and impact biomechanics
- Crashworthiness Structural Design and Optimization
- Metal Foam and its Application in Automotive part and Biomechanics
- Safety of Electric Vehicles



Collaboration:



Automotive Safety and Assessment Engineering

TGGGS-Building, Floor 7th

Email: julaluk.c@tggs.kmutnb.ac.th

Tel: 02-555-2000 Ext.2913

